



## Lesson 8: Graphs of Simple Non-Linear Functions

### Student Outcomes

- Students examine the average rate of change for non-linear functions and learn that, unlike linear functions, non-linear functions do not have a constant rate of change.
- Students determine whether an equation is linear or non-linear by examining the rate of change.

### Lesson Notes

In Exercises 4–10 students are given the option to graph an equation to verify their claim about the equation describing a linear or non-linear function. For this reason, students may need graph paper to complete these exercises. Students will need graph paper to complete the problem set.

### Classwork

#### Exploratory Challenge/Exercises 1–3 (19 minutes)

Students work independently or in pairs to complete Exercises 1–3.

#### Exercises

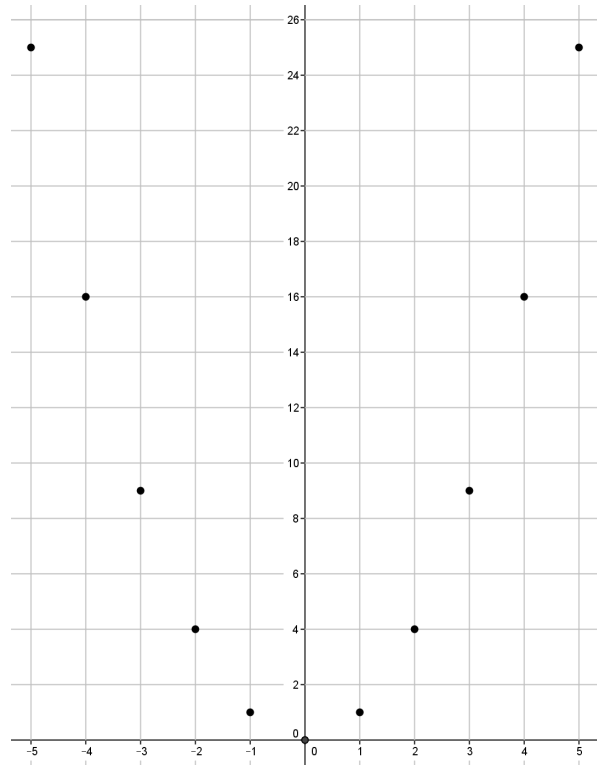
- A function has the rule so that each input of  $x$  is assigned an output of  $x^2$ .
  - Do you think the function is linear or non-linear? Explain.  
*I think the function is non-linear because non-linear expressions have variables exponents that are greater than one.*
  - Develop a list of inputs and outputs for this function. Organize your work using the table below. Then, answer the questions that follow.

Input ( $x$ )	Output ( $x^2$ )
–5	25
–4	16
–3	9
–2	4
–1	1
0	0
1	1
2	4
3	9
4	16
5	25

#### Scaffolding:

Students may benefit from exploring these exercises in small groups.

c. Graph the inputs and outputs as points on the coordinate plane where the output is the y-coordinate.



d. What shape does the graph of the points appear to take?

*It appears to take the shape of a curve.*

e. Find the rate of change using rows 1 and 2 from the table above.

$$\frac{25 - 16}{-5 - (-4)} = \frac{9}{-1} = -9$$

f. Find the rate of change using rows 2 and 3 from the above table.

$$\frac{16 - 9}{-4 - (-3)} = \frac{5}{-1} = -5$$

g. Find the rate of change using any two other rows from the above table.

*Student work will vary.*

$$\frac{16 - 25}{4 - 5} = \frac{-9}{-1} = 9$$

h. Return to your initial claim about the function. Is it linear or non-linear? Justify your answer with as many pieces of evidence as possible.

*This is definitely a non-linear function because the rate of change is not constant. Also, we would expect the graph of a linear function to look like a line and this graph is not a line. As was stated before, the expression  $x^2$  is non-linear.*

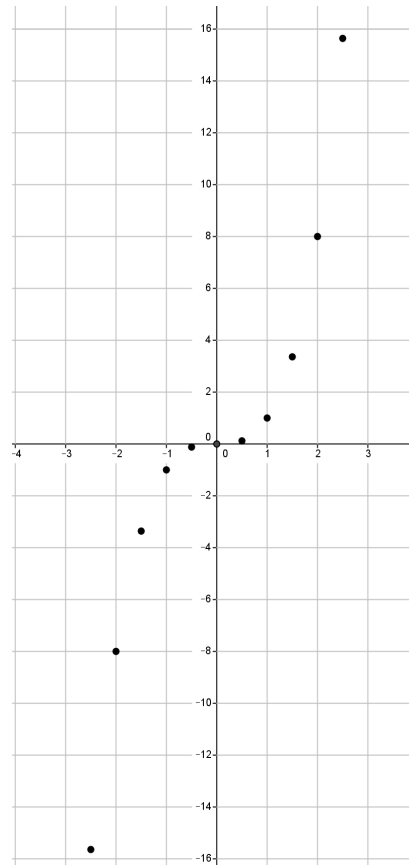
2. A function has the rule so that each input of  $x$  is assigned an output of  $x^3$ .

a. Do you think the function is linear or non-linear? Explain.

*I think the function is non-linear because non-linear expressions have variables with exponents that are greater than one.*

b. Develop a list of inputs and outputs for this function. Organize your work using the table below. Then, answer the questions that follow.

Input ( $x$ )	Output ( $x^3$ )
-2.5	-15.625
-2	-8
-1.5	-3.375
-1	-1
-0.5	-0.125
0	0
0.5	0.125
1	1
1.5	3.375
2	8
2.5	15.625



c. Graph the inputs and outputs as points on the coordinate plane where the output is the  $y$ -coordinate.

d. What shape does the graph of the points appear to take?

*It appears to take the shape of a curve.*

e. Find the rate of change using rows 2 and 3 from the table above.

$$\frac{-8 - (-3.375)}{-2 - (-1.5)} = \frac{-4.625}{-0.5} = 9.25$$

f. Find the rate of change using rows 3 and 4 from the table above.

$$\frac{-3.375 - (-1)}{-1.5 - (-1)} = \frac{-2.375}{-0.5} = 4.75$$

g. Find the rate of change using rows 8 and 9 from the table above.

$$\frac{1 - 3.375}{1 - 1.5} = \frac{-2.375}{-0.5} = 4.75$$

h. Return to your initial claim about the function. Is it linear or non-linear? Justify your answer with as many pieces of evidence as possible.

*This is definitely a non-linear function because the rate of change is not constant. Also, we would expect the graph of a linear function to look like a line and this graph is not a line. As was stated before, the expression  $x^3$  is non-linear.*

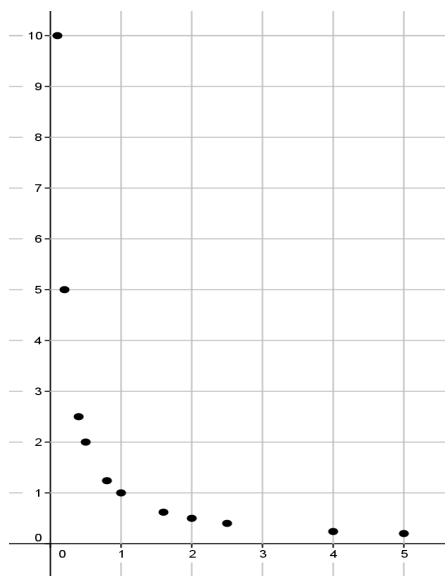
3. A function has the rule so that each input of  $x$  is assigned an output of  $\frac{1}{x}$  for values of  $x > 0$ .

a. Do you think the function is linear or non-linear? Explain.

*I think the function is non-linear because non-linear expressions have exponents that are less than one.*

b. Develop a list of inputs and outputs for this function. Organize your work using the table. Then, answer the questions that follow.

Input ( $x$ )	Output ( $\frac{1}{x}$ )
0.1	10
0.2	5
0.4	2.5
0.5	2
0.8	1.25
1	1
1.6	0.625
2	0.5
2.5	0.4
4	0.25
5	0.2



c. Graph the inputs and outputs as points on the coordinate plane where the output is the  $y$ -coordinate.

d. What shape does the graph of the points appear to take?

*It appears to take the shape of a curve.*

e. Find the rate of change using rows 1 and 2 from the table above.

$$\frac{10 - 5}{0.1 - 0.2} = \frac{5}{-0.1} = -50$$

f. Find the rate of change using rows 2 and 3 from the table above.

$$\frac{5 - 2.5}{0.2 - 0.4} = \frac{2.5}{-0.2} = -12.5$$

g. Find the rate of change using any two other rows from the table above.

*Student work will vary.*

$$\frac{1 - 0.625}{1 - 1.6} = \frac{0.375}{-0.6} = -0.625$$

h. Return to your initial claim about the function. Is it linear or non-linear? Justify your answer with as many pieces of evidence as possible.

*This is definitely a non-linear function because the rate of change is not constant. Also, we would expect the graph of a linear function to look like a line and this graph is not a line. As was stated before, the expression  $\frac{1}{x}$  is non-linear.*

**Discussion (4 minutes)**

- What did you notice about the rates of change in the preceding three problems?
  - *The rates of change were not all the same for each problem.*
- In Lesson 6, we learned that if the rate of change for pairs of inputs and corresponding outputs is the same for each pair, then what do we know about the function?
  - *We know the function is linear.*
- Therefore, if we know a rate of change for pairs of inputs and corresponding outputs is not the same for each pair, what do we know about the function?
  - *We know the function is non-linear.*
- What did you notice about the exponent of  $x$  in the preceding three problems?
  - *The equations  $y = x^2$  and  $y = x^3$  have variables with exponents that are greater than one, while the equation  $y = \frac{1}{x}$  has an exponent of  $x$  that is less than one.*
- What is another way to identify equations are non-linear?
  - *We know the function is non-linear when the exponent of  $x$  is not equal to one.*

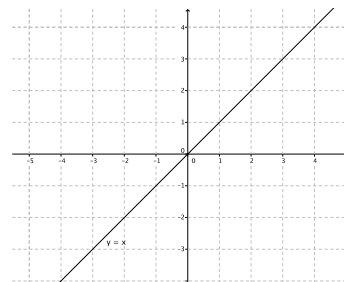
**Exercises 4–10 (12 minutes)**

Students work independently or in pairs to complete Exercises 4–10.

In Exercises 4–10 the rule that describes a function is given. If necessary, use a table to organize pairs of inputs and outputs, and then graph each on a coordinate plane to help answer the questions.

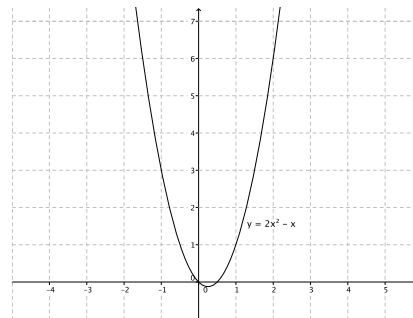
4. What shape do you expect the graph of the function described by  $y = x$  to take? Is it a linear or non-linear function?

*I expect the shape of the graph to be a line. This function is a linear function described by the linear equation  $y = x$ . The graph of this function is a line.*



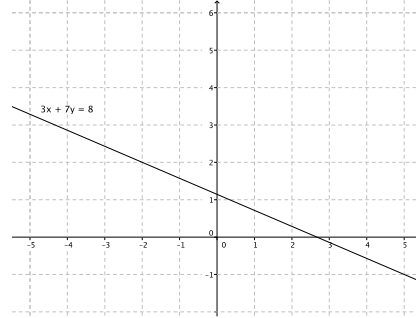
5. What shape do you expect the graph of the function described by  $y = 2x^2 - x$  to take? Is it a linear or non-linear function?

*I expect the shape of the graph to be something other than a line. This function is non-linear because it does not graph as a line and the exponent of  $x$  is greater than one.*



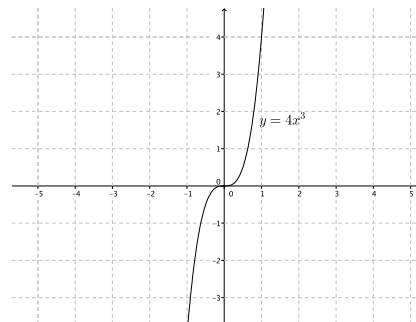
6. What shape do you expect the graph of the function described by  $3x + 7y = 8$  to take? Is it a linear or non-linear function?

*I expect the shape of the graph to be a line. This function is a linear function described by the linear equation  $3x + 7y = 8$ . The graph of this function is a line.*



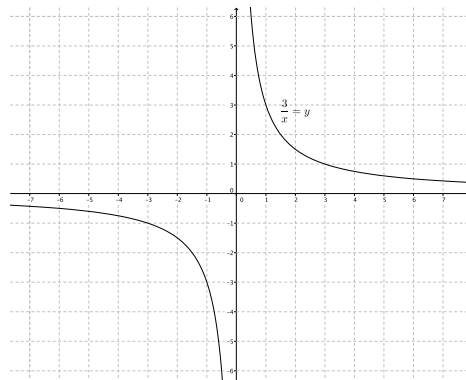
7. What shape do you expect the graph of the function described by  $y = 4x^3$  to take? Is it a linear or non-linear function?

*I expect the shape of the graph to be something other than a line. This function is non-linear because it does not graph as a line and the exponent of  $x$  is greater than one.*



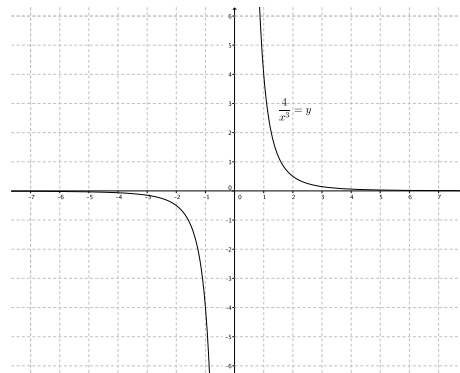
8. What shape do you expect the graph of the function described by  $\frac{3}{x} = y$  to take? Is it a linear or non-linear function?

*I expect the shape of the graph to be something other than a line. This function is non-linear because it does not graph as a line and the exponent of  $x$  is less than one.*



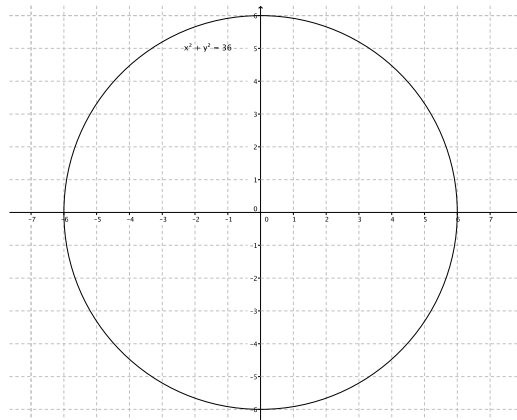
9. What shape do you expect the graph of the function described by  $\frac{4}{x^2} = y$  to take? Is it a linear or non-linear function?

*I expect the shape of the graph to be something other than a line. This function is non-linear because it does not graph as a line and the exponent of  $x$  is less than one.*



10. What shape do you expect the graph of the equation  $x^2 + y^2 = 36$  to take? Is it a linear or non-linear? Is it a function? Explain.

*I expect the shape of the graph to be something other than a line. It is non-linear because it does not graph as a line and the exponent of  $x$  is greater than one. It is not a function because there is more than one output for any given value of  $x$ . For example, at  $x = 0$  the  $y$ -value is both 6 and  $-6$ . This does not fit the definition of function because functions assign to each input exactly one output. Since there is at least one instance where an input has two outputs, it is not a function.*



### Closing (5 minutes)

Summarize, or ask students to summarize the main points from the lesson.

- Students understand that, unlike linear functions, non-linear functions do not have a constant rate of change.
- Students know that if the exponent of  $x$  is not equal to one, the graph will not be linear.
- Students expect the graph of non-linear functions to be some sort of curve.

#### Lesson Summary

One way to determine if a function is linear or non-linear is by inspecting the rate of change using a table of values or by examining its graph. Functions described by non-linear equations do not have a constant rate of change. Because some functions can be described by equations, an examination of the equation allows you to determine if the function is linear or non-linear. Just like with equations, when the exponent of the variable  $x$  is not equal to 1, then the equation is non-linear; therefore, the function described by a non-linear equation will graph as some kind of curve, i.e., not a line.

### Exit Ticket (5 minutes)

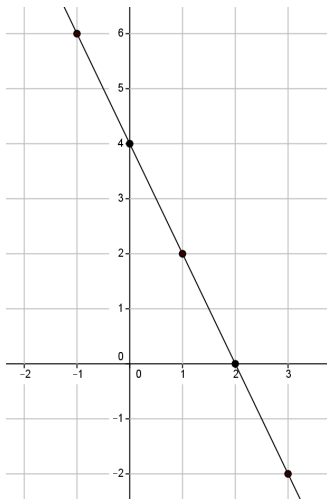
Name \_\_\_\_\_

Date \_\_\_\_\_

## Lesson 8: Graphs of Simple Non-Linear Functions

### Exit Ticket

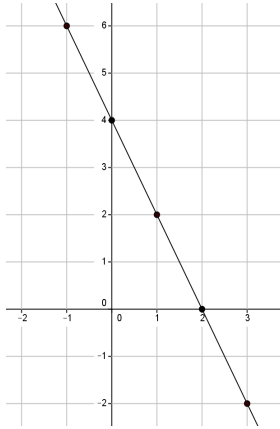
1. The graph below is the graph of a function. Do you think the function is linear or non-linear? Show work in your explanation that supports your answer.



2. A function has the rule so that each input of  $x$  is assigned an output of  $\frac{1}{2}x^2$ . Do you think the graph of the function will be linear or non-linear? What shape do you expect the graph to take? Explain.

## Exit Ticket Sample Solutions

1. The graph below is the graph of a function. Do you think the function is linear or non-linear? Show work in your explanation that supports your answer.



*Student work may vary. Accept any answer that shows the rate of change is not the same for two or more sets of coordinates.*

*The rate of change of the coordinates (0, 4) and (1, 2):      The rate of change of the coordinates (1, 2) and (2, 0):*

$$\begin{aligned}\frac{4-2}{0-1} &= \frac{2}{-1} \\ &= -2\end{aligned}$$

$$\begin{aligned}\frac{2-0}{1-2} &= \frac{2}{-1} \\ &= -2\end{aligned}$$

*When I check the rate of change for any two coordinates, they are the same; therefore, the graph of the equation is linear.*

2. A function has the rule so that each input of  $x$  is assigned an output of  $\frac{1}{2}x^2$ . Do you think the graph of the function will be linear or non-linear? What shape do you expect the graph to be? Explain.

*The equation is non-linear because the exponent of  $x$  is greater than 1. I expect the graph to be some sort of curve.*

## Problem Set Sample Solutions

1. A function has the rule so that each input of  $x$  is assigned an output of  $x^2 - 4$ .

- a. Do you think the function is linear or non-linear? Explain.

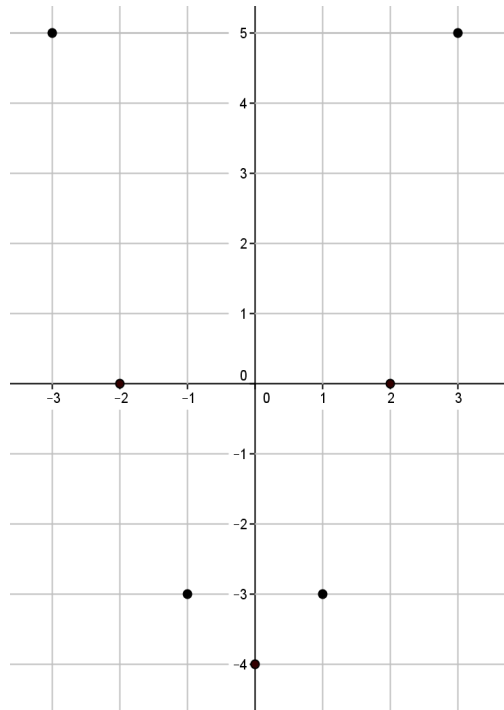
*No, I don't think the equation is linear. The exponent of  $x$  is greater than one.*

- b. What shape do you expect the graph of the function to be?

*I think the shape of the graph will be a curve.*

- c. Develop a list of inputs and outputs for this function. Graph the input and outputs as points on the coordinate plane where the output is the  $y$ -coordinate.

Input ( $x$ )	Output ( $x^2 - 4$ )
-3	5
-2	0
-1	-3
0	-4
1	-3
2	0
3	5



- d. Was your prediction correct?

*Yes, the graph appears to be taking the shape of some type of curve.*

2. A function has the rule so that each input of  $x$  is assigned an output of  $\frac{1}{x+3}$ .

- a. Is the function linear or non-linear? Explain.

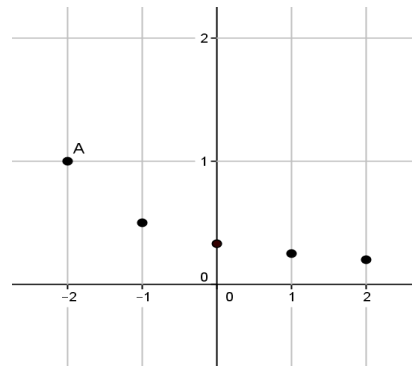
*No, I don't think the function is linear. The exponent of  $x$  is less than one.*

- b. What shape do you expect the graph of the function to take?

*I think the shape of the graph will be a curve.*

- c. Given the inputs in the table below, use the rule of the function to determine the corresponding outputs. Graph the inputs and outputs as points on the coordinate plane where the output is the  $y$ -coordinate.

Input ( $x$ )	Output ( $\frac{1}{x+3}$ )
-2	1
-1	0.5
0	0.3333 .....
1	0.25
2	0.2
3	0.16666 .....



- d. Was your prediction correct?

*Yes, the graph appears to be taking the shape of some type of curve.*

3. Is the function that is represented by this graph linear or non-linear? Explain. Show work that supports your conclusion.

*Student work may vary. Accept any answer that shows the rate of change is not the same for two or more sets of coordinates.*

*It does not appear to be linear.*

*The rate of change for the coordinates  $(-2, -2)$  and  $(-1, 1)$ :*

$$\frac{-2 - 1}{-2 - (-1)} = \frac{-3}{-1} = 3$$

*The rate of change for the coordinates  $(-1, 1)$  and  $(0, 2)$ :*

$$\frac{1 - 2}{-1 - 0} = \frac{-1}{-1} = 1$$

*No, the graph is not linear; therefore, the function is not linear. When I check the rate of change for any two sets of coordinates they are not the same.*

