

# SOCIAL NETWORKING

## CHARACTER STUDY – FACEBOOK

(page 1 of 4)

Have your students create a Facebook profile.

**Overview:** Being able to empathize with fictional characters sheds light on our own personal situations, and reframes the plot of the play in relevant terms.

**Grade:** 6–12

**Goal:** To bring the characters of *A Midsummer Night's Dream* into a real-world context.

**State Standards:** English Literary Response and Analysis 3.0-3.4

**Outcomes:** By creating a mock Facebook page, students will be able to use basic facts from the text to imaginatively enter into the thoughts, feelings, and motivations of fictional characters.

**Activity:** Familiarize students with the profile layout of a social networking site page, such as Facebook. (See following examples.)

1. Ask the students to fill in the profile with:
  - a. vital statistics
  - b. likes and dislikes
  - c. friends

**Note:** Students should use information drawn from their knowledge of the play (for example, Puck loves to play tricks on people), and then fill out the profile using their imaginations (for example, when Puck was little, a favorite trick was turning over children's milk glasses and watching the milk run all over the floor).

2. Profile photos may be drawn or cut out from magazines, or an actual photo of the student could be used and attached to the page. Remember, many actual Facebook profile pages do not have an actual photo of the person who made them—students sometimes choose a picture of something they feel represents them—a tree, a poster they like, etc.
3. Share the pages you have created in student pairs or in a group discussion.

# SOCIAL NETWORKING

## CHARACTER STUDY – FACEBOOK

(Page 2 of 4)

### Reflection:

- Name one thing you had to imagine about your character that you think is really interesting.
- Was it easy to imagine events outside the play—for instance, what might Hermia’s activities and interests be? Or do you feel the play did not provide enough information? How so?
- How easy was it to decide who your character’s friends are? Would your character ignore a friend request from other characters in the play? Why or why not?

### Extension exercise in writing dialogue:

Extend this activity beyond the basic profile by having the students write on each other’s profile “walls.” A wall is the area on a profile page where friends can write short messages to each other that are posted directly on the page for others to view.

**Note:** Require the students to fill out the worksheet manually, rather than actually fill out a public profile online. If you can post the following mock profile page onto your classroom or school blog website for students to fill out online within the framework of this project, that would work as well, but false profiles in a public space should be actively discouraged. Student examples should show a deep understanding of the plot and qualities of the character. Some examples follow.





**Helena** is \_\_\_\_\_  
updated 400 years ago · Athens, Greece

#### PERSONAL INFORMATION

Religious Views: [Demetrius is God](#)

Interests: [Demetrius](#)

Activities: [Talking to Demetrius](#), [writing Demetrius love letters](#), [following Demetrius](#), [attempting to break into Demetrius' house](#), [stealing Demetrius' socks](#), [going through Demetrius' garbage](#), [origami](#)

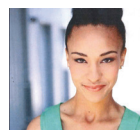
Favorite Music: [Demetrius singing in the shower](#), [Demetrius yelling at me to get out of his bathroom](#)

#### FAVORITE QUOTES

“So we grow together, Like to a double cherry, seeming parted,  
But yet an union in partition; Two lovely berries moulded on one stem”  
-Hermia, my BFF

Write something...

#### RECENT ACTIVITY



**Hermia** wrote:

“My dad is being soooo stupid! He’s being SUCH a jerk about the whole marriage thing. Me and Lysander are eloping in the forest, ttyl!”

Like • Comment • Share



Write a comment...



**Demetrius** wrote:

“Helena, please stop poking me. It’s just sad.”

Like • Comment • Share



Write a comment...



#### ABOUT

Networks: [Athens](#), [Magical Forest Outside Athens](#)

From [Athens, Greece](#)

Relationship status: [single](#)

Email: [DemetriusLuvr4Ever@athens.nobility.net](mailto:DemetriusLuvr4Ever@athens.nobility.net)

#### FRIENDS



Lysander



Helena



is \_\_\_\_\_

## ABOUT

 Networks:

 From

 Relationship status:

 Email:

## PERSONAL INFORMATION

Religious Views:

Interests:

Activities:

Favorite Music:

## FAVORITE QUOTES

Write something...

## FRIENDS

## RECENT ACTIVITY

Like • Comment • Share



Like • Comment • Share



